



# Shush Liner™

## Acoustic wall panels

Our Shush Liner™ is a high quality sound absorbing panel system. The panels are designed as a wall lining to control reverberant noise in areas with hard surfaces.

Shush Liner™ acoustic panel system improves the quality of the workplace environment due to the products ability to absorb echo and reverberation. Designed with a fabric finish which is available in a vast range of fabric colours.



## What is Shush Liner™?

Shush Liner™ acoustic wall panels offer a fabric faced panel solution for areas where there is an echo and reverberation problem. The acoustic wall panels are extensively used in schools, offices, restaurants, studios, sports and community halls and meeting rooms. The list is endless.

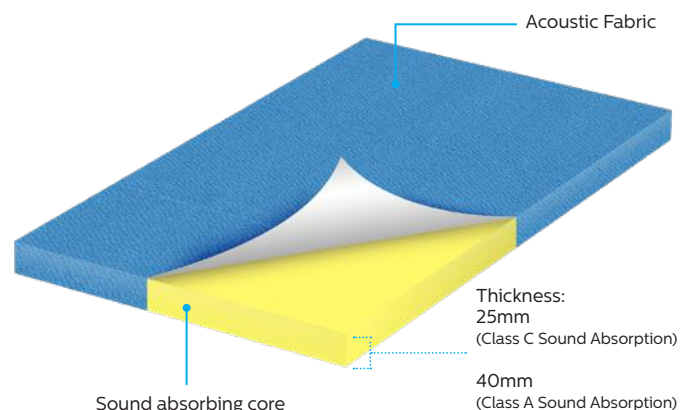
Shush Liner™ panels perform on several fronts. As well as solving your acoustic problem, they also come to you pre-decorated to offer a tasteful level of decoration by injecting colour and texture into your desired setting. Ideal for any internal environment where first impressions count and noise management enhances the quality of space. Designed to transform any area into a vehicle for creating the perfect impression.

Shush Liner™ acoustic wall panels are available in standard size panels and can be manufactured in customised sizes to meet your requirement. The Shush Liner™ acoustic wall panels can change the aesthetics of a room as well as making it acoustically correct. We offer a wide variety of fabric colours which come in both standard and superior fabric finishes. Clients are able to select a fabric of their own choice. Should this be the chosen option a small sample of the fabric would be required to check suitability.

Shush Liner™ is applied to the wall with impaling clips and ShushBond contact adhesive.

### ADVANTAGES OF SHUSH LINER™:

- Outstanding sound absorption performance – **Class A and Class C**
- Over 100 standard fabric colours available
- High content of recyclable material
- Easy installation method
- Very quick availability

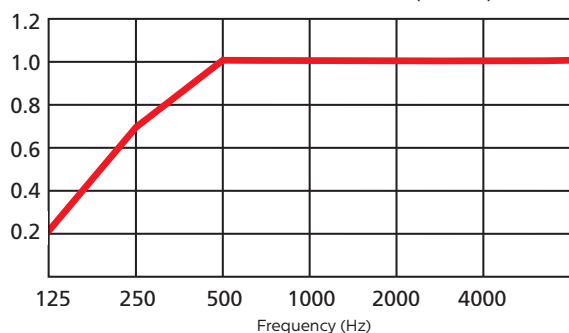




# Technical + Acoustic Performance

## Class A Acoustic Absorber - 40mm Thickness

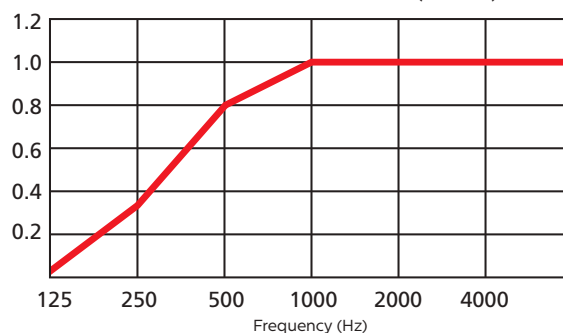
Acoustic Performance BS EN ISO 354:2003  
Noise Reduction Coefficient 0.95 (i.e. 95%)



Direct fixed backing

## Class C Acoustic Absorber - 25mm Thickness

Acoustic Performance BS EN ISO 354:2003  
Noise Reduction Coefficient 0.80 (i.e. 80%)



Direct fixed backing

Higher absorption can be achieved when installed with a cavity



### CLEANING

Light dirt marks may be removed by using a proprietary carpet spot cleaner. A small area should be tested before doing the rest of the area to ensure that the fabric is not adversely affected.



### FIRE

Shush Liner™ core board has been tested and offers Class O fire rating to BS476: Part 6.

Fabric facing complies with:

Lucia/Cara: Class 1 to BS476: Part 7 and EN1350-1

Class B, s1, d0

Bondai: EN 13501 Class C, s1, d0

Sonus: EN1350-1 Class B, s1, d0

Class O fabrics can be supplied on request



### WEIGHT

Our Shush Liner™ panels weigh in at 3.5kg/m<sup>2</sup> for the 25mm thickness panels. 40mm thickness panels weigh 4.5kg/m<sup>2</sup>.

Note: All weights are given as approximations.



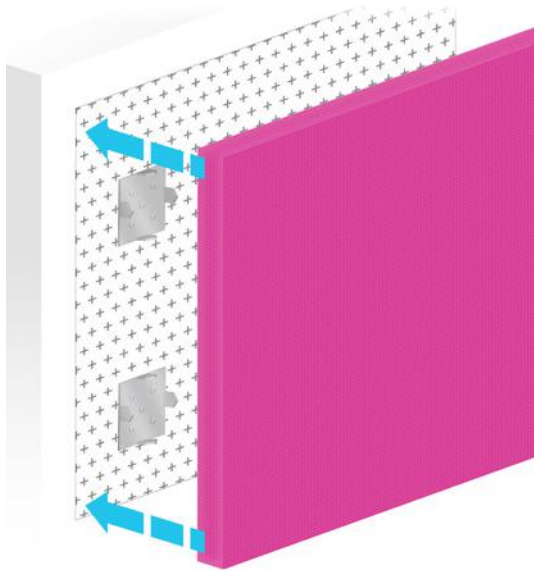
### CUTTING

Shush Liner™ panels can be cut with a sharp Stanley knife.





# Shush Liner™ Bespoke System



Shush Liner™ Bespoke system allows for a secure installation of Shush Liner™ panels without the added aesthetic of visible trims. Instead, each panel is custom manufactured to the size required and the fabric is wrapped around all 4 edges. The panel is simply bonded to the wall by using our impaling clips and ShushBond adhesive.

Our impaling clips & ShushBond™ contact adhesive make light work of installations – Whether your applying panels to concrete, masonry, wood, plaster, or metal. Our Impaling clips are available in 2 different depths to accommodate both panel thicknesses. The correct clips & quantities will be included with your order, whatever the thickness.

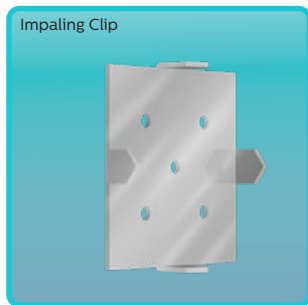
## Standard Sizes: (25mm or 40mm thickness)

1200 x 900mm	1200 x 2100mm	1200 x 3000mm (40mm thick only)
1200 x 1200mm	1200 x 2400mm	
1200 x 1800mm	1200 x 2700mm	

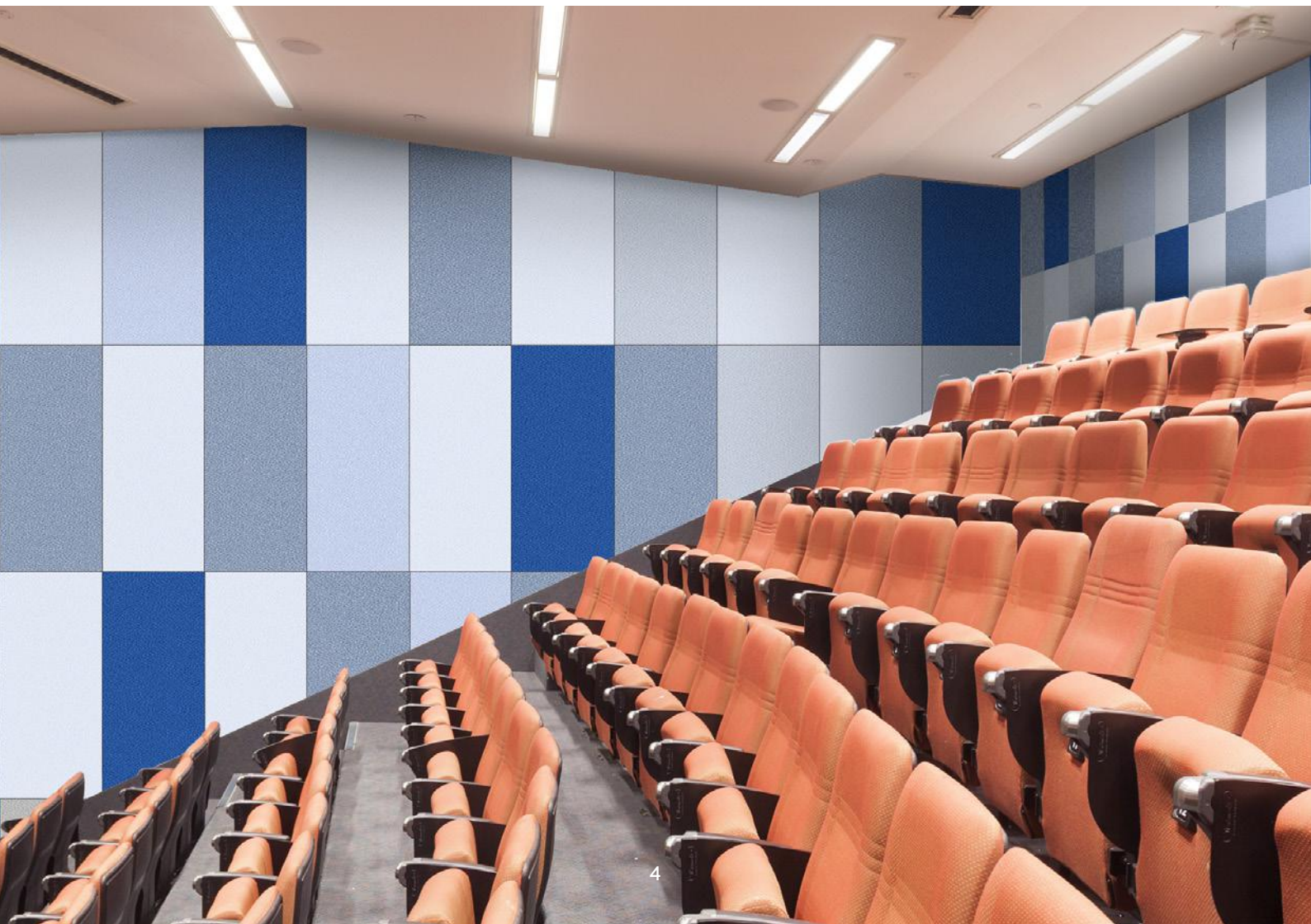
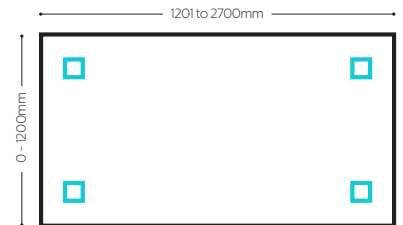
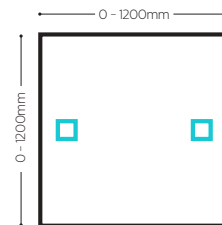
Due to the directional weave in our fabrics, it is essential that the height & width dimension of each panel be stated when ordering

Dimensional tolerance of panels: +/- 4mm.

## Shush Liner™ Bespoke System Components



We recommend using the following number of impaling clips for the appropriate panel sizes.



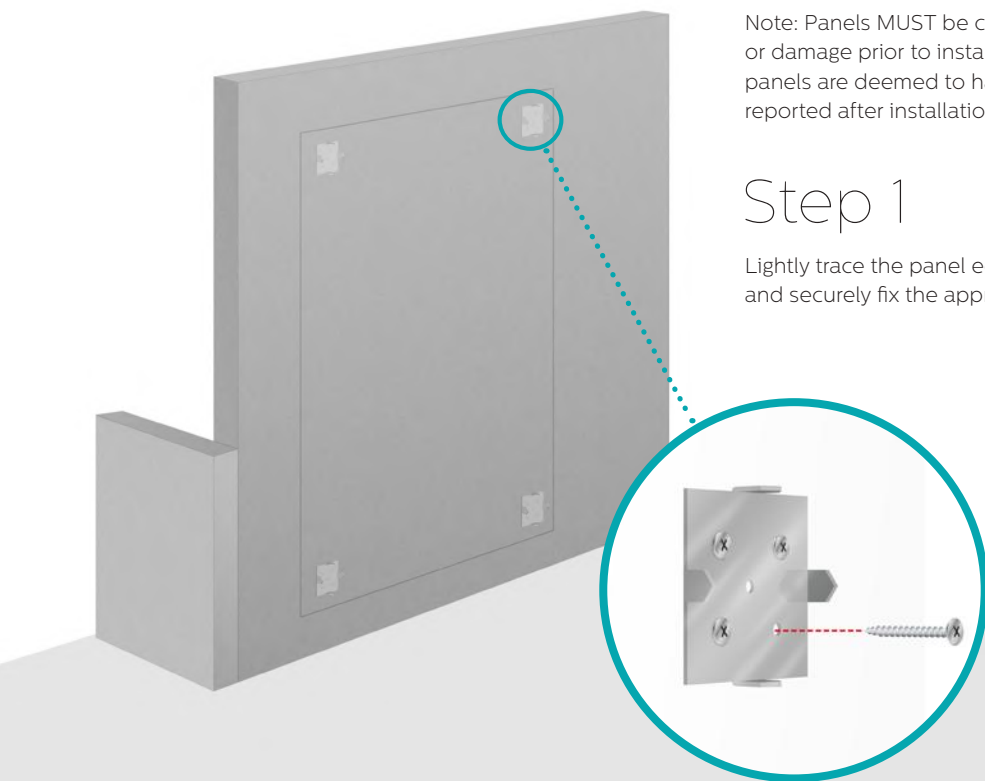
# Installation

Ensure all wall surfaces to which the panel will be applied to are clean and dry. Panels can be fixed to most surfaces including concrete, plasterboard and block work providing they are solid. Wallpaper should be removed. Gloss paint roughened. Emulsion paint brushed with a stiff brush.

Note: Panels MUST be checked for colour shading differences, flaws, defects or damage prior to installation. Once installation has been commenced, the panels are deemed to have arrived in perfect condition – any of the above reported after installation will not be covered by your warranty

## Step 1

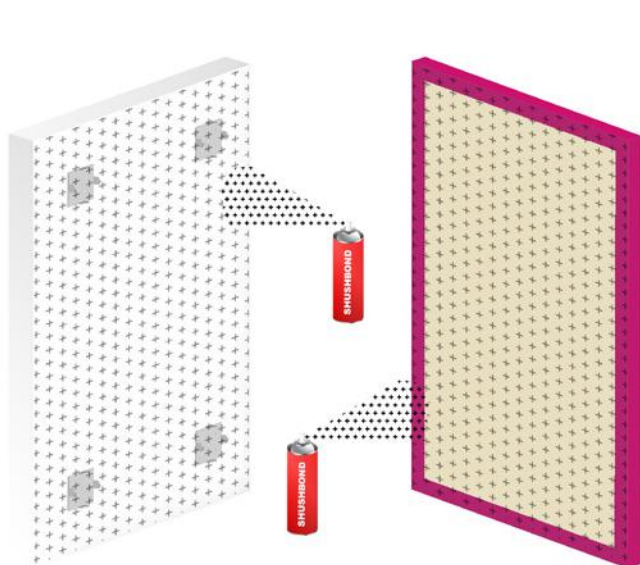
Lightly trace the panel edges onto the desired installation area. Then suitably and securely fix the appropriate number of clips using screws.



## Step 2

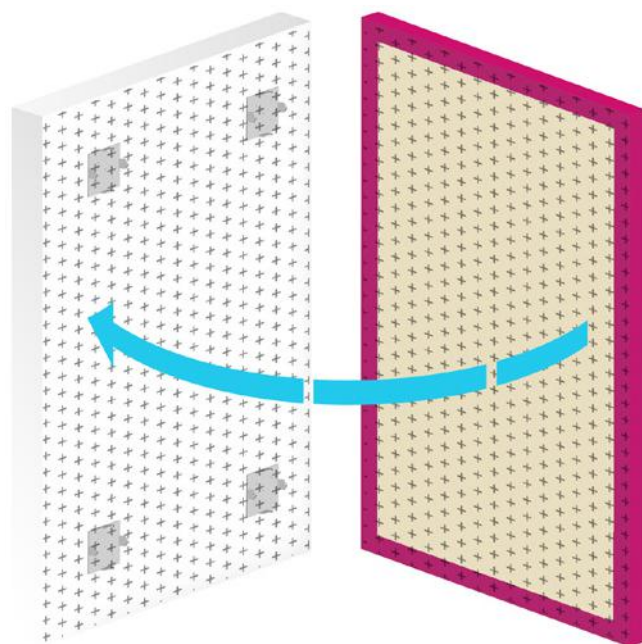
Spray ShushBond™ contact adhesive vertically onto the panels reverse surface and horizontally onto the desired installation area. Be sure to spray over the clips with ShushBond™.

**!!! ShushBond™ should be applied to 100% of the surface area on both surfaces !!!**



## Step 3

After waiting for the adhesive to dry (2-5 minutes at 23°C) carefully align the panel to the marked area and push gently – allowing the clip spikes to bite into the panel. Once confident with the panel positioning, press firmly over the entirety of the surface and ensure maximum contact has been made with the wall.



Note: Boards Direct Ltd will not accept any liability for the loss or damage that may occur of any kind which is outside of our control. We strongly instruct to make sure the product suitability is confirmed by doing your own tests. Panels MUST be checked for colour shading differences, flaws, defects or damage prior to installation. Once installation has been commenced, the panels are deemed to have arrived in perfect condition – any of the above reported after installation will not be covered by your warranty



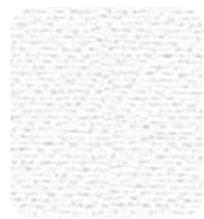




# Fabric Colours

Whatever your décor – Whatever your style – we are sure to have you covered with our extensive range of fabric colours.

## LUCIA COLOUR RANGE



Adobo YB165



Martinique YB004



Bluebell YB097



Marianna YB157



Steel YB095



Ocean YB100



Campeche YB301



Madura YB156



Apple YB096



Windjammer YB047



Montserrat YB011



Paseo YB019



Rum YB086



Aruba YB093



Slip YB094



Oyster YB107



Blizzard YB108



Buru YB170



Solano YB088



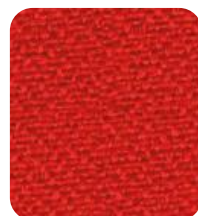
Calypso YB106



Lobster YB087



Tortuga YB168



Belize YB105



Bridgetown YB102



Sombrero YB046



Tarot YB090



Havana YB009



Sandstorm YB302



Tequila YB038



Scuba YB089



Costa YB026

!!! Please note that the above colors are representative of the actual colours which may vary in shade or texture. We are able to provide actual fabric colour card upon request !!!



# Fabric Colours

Whatever your décor – Whatever your style – we are sure to have you covered with our extensive range of fabric colours.

## BONDAI COLOUR RANGE



!!! Please note that the above colors are representative of the actual colours which may vary in shade or texture. We are able to provide actual fabric colour card upon request !!!



# Fabric Colours

Whatever your décor – Whatever your style – we are sure to have you covered with our extensive range of fabric colours.

## SONUS COLOUR RANGE



Voice FHR02



Audio FHR06



Melody FHR07



Soul FHR13



Beat FHR03



Song FHR01



Pop FHR09



Acoustic FHR12



Chorus FHR17



Verse FHR16



Amp FHR05



Music FHU04



Vocal FHU08



Chime FHU10



Rap FHU11



Classical FHU14



Lyric FHU15

!!! Please note that the above colors are representative of the actual colours which may vary in shade or texture. We are able to provide actual fabric colour card upon request !!!



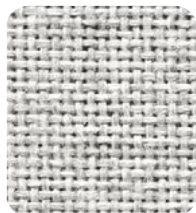
# Fabric Colours

Whatever your décor – Whatever your style – we are sure to have you covered with our extensive range of fabric colours.

## CARA COLOUR RANGE



Vit EJ184



Glass EJ004



Dolphin EJ105



Galilee EJ125



Adriatic EJ154



Inverness EJ175



Lead EJ104



Spray EJ033



Lomond EJ192



Austen EJ173



Beltane EJ193



Shetland EJ191



Lossie EJ197



Tummel EJ038



Pitlochry EJ076



Maree EJ195



Fairisle EJ186



Staffa EJ185



Lora EJ187



Ronay EJ189



Easdale EJ188



Walten EJ011



Portland EJ016



Merrick EJ048



Chaucer EJ172



Hillswick EJ190



Denny EJ196



Black EJ138



Clan EJ169



Carron EJ015



Lerwick EJ194



Cluanie EJ180

!!! Please note that the above colors are representative of the actual colours which may vary in shade or texture. We are able to provide actual fabric colour card upon request !!!





# Product Specification

## 1. Product

Install with the following components:

### Shush Liner™ Bespoke Panel System

Size of panel: .....mm (h) x .....mm (w)  
 25mm thick                      Class C Absorption  
 40mm thick                      Class A Absorption  
 ShushBond                      ShBond 500ml Cans  
 Impaling clips

## 2. Finish

Fabric colour to be chosen from the SoundHush standard range:

<i>Lucia</i>	Colour..... YB .....
<i>Bondai</i>	Colour.....
<i>Sonus</i>	Colour..... FHR..... FHU.....
<i>Cara</i>	Colour..... E) .....

## 3. Delivery, Storage & Handling

Protect ShushLiner Wall Panels from excessive moisture when storing, and handling.

## 4. Installation

Install acoustic wall panels in locations indicated, top edges level and in alignment with other panels. Comply with manufactures written instructions for installation of panels using type of fixing accessories indicated as recommended by the manufacturer.

## 5. Cleaning

- A. After completion of installation of panels, remove dust on panels.
- B. Remove surplus material, rubbish, and debris resulting from panel installation, on completion of the work, and leave areas of installation in a neat and clean condition.

## 6. Supplier

Shush Liner™ - Acoustic panel system as supplied by:  
 Boards Direct  
 Unit 4 Poplars Court, Lenton Lane, Nottingham, NG7 2RR  
[www.boardsdirect.co.uk](http://www.boardsdirect.co.uk)  
[sales@boardsdirect.co.uk](mailto:sales@boardsdirect.co.uk)  
 0800 612 5432